

# Creel Notes from the



P.O. Box 639, Mercer Island, WA 98040



August, 2004

## President's Riffle By Jim McRoberts

The results are in! The July "non meeting" turned out well with Tim Borski's presentation and the 86 people who attended. We had 80 paid attendees and six who did not eat. We had four from Overlake Fly Fishing Club, seven from NW Fly Anglers, five from Northwest Women's Fly Fishers. There were also five Northwest Fly Fishermen who are also members of WFFC. Beth Kuhn of NWF gave a conservation report for her club. They collect used or broken cell phones to recycle. Bill Van Netter gave a report from Northwest Fly Anglers about culvert restoration projects to improve fish passage.

My wife and I drove to Bellevue, ID, near Sun Valley, for a grandchild "fix" and to fish some of the waters I fished as a boy. I had just read the article in "Northwest Fly Fishing" about several streams near Hagerman on the Snake River. I only fished one of the three mentioned, Riley Creek. I fished the Oster Lakes that are part of Riley Creek and the State Fish Hatchery. I used woolly buggers and chironomids as a dropper under an elk hair caddis. I caught fish in all of them. In fact the chironomids worked better than the power bait used by some of the other anglers! One day

I went to Clear Lake Golf and Fly Fishing Club. It is near Bliss. They stock the lake with "big" fish November through May. The price to fish all day is a whopping \$10.00! When I checked in at the pro shop, I was told it was a poor time to fish since it had not been stocked since May. It is a about a 100 acre lake and I saw fish rising as I drove into the club. He said he would charge me the kid's rate of \$3.50! I landed two fish (16-18inches) and lost several in the two hours I fished. Again black woolly buggers and chironomids brought the most strikes.

We drove on up to Bellevue and the next day I fished the Big Wood River. I had not fished it in about five years but I was armed with a map made by **Steve Sunich** and some of his caddis pupas. I fished one morning for three hours on a riffle that was about 100 yards long. I used an elk hair caddis #16 with Steve's caddis pupa as a dropper part of the time and part of the time only the dry. The fish just loved them! In that short time, I raised over 30 fish hooked 20 or 25 and landed 15. Most were eight to twelve inches but some went to 16 inches. Thanks Steve! These are all wild fish! When I fished here in the 40's - 60's it was all "put and take". Silver Creek is next.

NOTICE: The next WFFC board meeting is September 7th, a Tuesday.

## Inside.....

Fishing or Sex	2
Summer Steelhead Report	3
High Lakes Report	3
Baja California Report	5
Elwha Dams Removal	6
Club Notes	6
Bruce Clingan Passage	7

## Subject: Fishing VS Sex (20 points FOR fishing)

- #20 - No matter how much whiskey you've had, you can still Fish.
- #19 - A limp rod is still useful while Fishing.
- #18 - You don't have to hide your Fishing magazines.
- #17 - It is perfectly acceptable to pay a professional to Fish with you once in a while.
- #16 - The Ten Commandments don't say anything against Fishing.
- #15 - If your partner takes pictures or videotapes of you Fishing, you don't have to worry about them showing up on the Internet if you become famous.
- #14 - Your Fishing partner doesn't get upset about people you Fished with long ago.
- #13 - It's perfectly respectable to Fish with a total stranger.
- #12 - When you see a really good Fishing person, you don't have to feel guilty about imagining the two of you Fishing together.
- #11 - If your regular Fishing partner isn't available, he/she won't object if you Fish with someone else.
- #10 - Nobody will ever tell you that you will go blind if you Fish by your yourself.
- #9 - When dealing with a Fishing pro, you never have to wonder if he is an undercover cop.
- #8 - You don't have to go to a sleazy shop in a seedy neighborhood to buy Fishing stuff.
- #7 - You can have a Fishing calendar on your wall at the office, tell Fishing jokes, and invite coworkers to Fish with you without getting sued for Fishing harassment.
- #6 - There are no Fishing-transmitted diseases.
- #5 - If you want to watch Fishing on television, you don't have to subscribe to the Playboy channel.
- #4 - Nobody expects you to Fish with the same partner for the rest of your life.
- #3 - Nobody expects you to give up Fishing if your partner loses interest in it.
- #2 - You don't have to be a newlywed to plan a vacation primarily to enjoy your favorite activity.
- #1 - Your Fishing partner will never say, "Not again? We just Fished last week! Is Fishing all you ever think about?"

*(editors note: You can also Fish a lot longer.)*



## Creel Notes

...is the official publication of the Washington Fly Fishing Club. Subscription is free with membership.

Leland Miyawaki...Co-editor  
206-264-0609 miyawaki@iswnet.com

Bob Young...Publisher  
206-323-2189 fishbum@seanet.com

### President

Jim McRoberts jim4fish@comcast.net

### 1st Vice President (membership)

Bill Kuper billk@digitalfarm.com

### 1st Vice President

Rocco Maccarrone maccarrone@email.msn.com

### 2nd Vice President (Programs)

Keith Robbins flymooch@aol.com

### Secretary

Walt Swanson wvsiii@aol.com

### Treasurer

Steve Sunich qualitypacific@cs.com

### Ghillie

Don Schroder donschr99@yahoo.com

### Trustees

Dick Brening '02	Jerry Sammons '02
Jim Hanson '03	Dave Schorsch '03
Hugh Clark '04	Paul Lingbloom '04

### Club Aims and Purposes

The purpose of this club shall be:

1. To improve and increase the sport of Fly Fishing in the State of Washington.
2. To work to the outlawing the use of salmon eggs in any form during the regular trout season.
3. To promote and work for the betterment of trout streams and lakes.
4. To encourage and advocate the conservation and increase of trout in state waters.
5. To promote a campaign of education against pollution in streams, lakes or Sound waters of the State of Washington.
6. To encourage and assist boys — particularly of high school age—to become fly fishermen and true sportsmen.



## Five Summer Fish from the Snoqualmie

By Leland Miyawaki

Wednesday, July 21

I was on the water at 6am (flow: 660cfs) and fished the top of the lower DP pool first with no results. I waded down and around the big rock and concentrated on getting a good swing on the other side of the downstream submerged rock in the middle of the river. At 7am, as my #7 Freight Spey swung down and over the rock, I forced the swing through the turbulence. The fish hit just before the hang down. It wallowed then bolted down and across stream where it jumped once then swam back across and sulked. I retrieved my line in as far as the butt knot and saw that it was a nice buck before he turned and got off. This was my first fish in 19 trips to the Snoqualmie.

Saturday, July 24

The flow was 600cfs. I was in Powerline at 5:30am. At 5:50, in the well-oxygenated top of the run, I hooked and landed a beautiful little lady of about 6-8 pounds. She took the same grease-lined #7 Freight Spey as the buck on Wednesday.

Monday, August 2

I believe we have a new Alpha Hole. One hen last Sunday and one buck this morning, both on the same fly, a #7 Freight Spey. Water flow was 500cfs

Thursday, August 6

The water continues to drop. I fished Powerline again. This morning it was at 495cfs. The temp was down due to the night time low and the days being cooler. She hit the #7 Freight Spey right in the bucket. She was of hatchery origin, very bright and looked to be 6-8pounds. Sean

Ransom showed up on the other side just as I released her. He fished through without a touch. I hooked another just as he pulled away from the turnout. After four headshakes and a zip off my reel, it came unbuttoned. Oops, the hook was bent from an errant D-loop into the rocks.

*(It's up to six now)*

---

**WFFC High Lakes Trip, Alpine Lakes Wilderness, Chain and Doelle Lakes, July 29 - Aug. 2**

**Pete Baird, Dick Brening, Ron Dion, Paul Lingbloom** and Master Caster **Don Simonson** departed early Thursday morning for Stevens Pass eager to hit the trail at 7:50 a.m. The hike began on the Pacific Crest Trail, PCT, (elev. 4056') climbing to the top of Aquarius ski lift (elev. 5200'). This was just the beginning of an up and down day! After a rest stop we headed down hill, bottoming out at elev. 4595' and headed up to Lake Susan Jane where we observed a few small fish rising while we let our breath catch up with us. Then we hiked up to the ridge overlooking Josephine Lake (elev. 5000"). Here we left the PCT and hiked down trail 1551 to Lake Josphine (elev. 4681') where we watched numerous trout rising and enjoyed the cool breeze while we ate lunch. Much of the area near the outlet of Lake Josephine was marked as "restoration area" in order to allow return of vegetation from overuse. On the return trip we noticed small fingerling trout in the outlet stream indicating natural reproduction.

Lake Josephine is the headwaters of Icicle Creek. We headed down Icicle Creek to elev. 3800'. About 1/4 mile later we headed up trail 1569, climbing a butt-dragging, grueling 1879' in 3 1/2 miles to the Chain Lakes (elev. 5679'). In 8 - 9 hours (8 hours for 3 of us and 9 hours for

*(Continued on page 4)*

*(Continued from page 3)*

the other 2, names intentionally omitted) we had traversed 11.1 miles while climbing a total of 3428'.

Paul and Don located a serene, little-used campsite on middle Chain lake where we set up camp for the next 4 nights. From the campsite we had a clear view of Bulls Tooth (elev. 6807'), middle Chain Lake and the cirque around the 3 Chain Lakes.



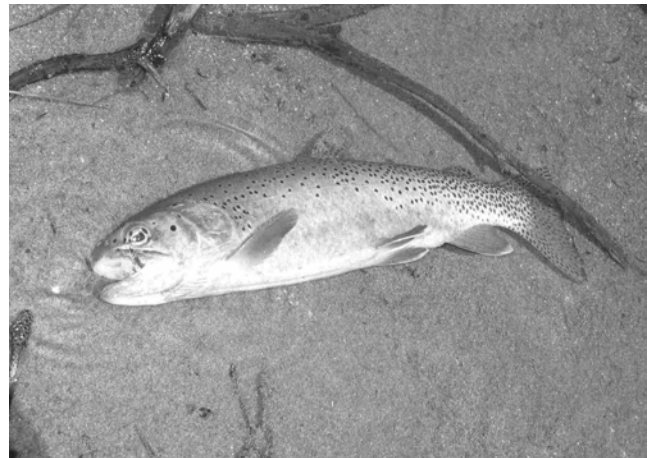
***A Home With A View***

After the arduous hike we managed to pitch tents, cook dinner, then crashed for the night. In scouting around it was apparent that very few hikers had been to these lakes this year. During the 3 days at the lakes we only encountered 4 other hikers; a young couple came in on Saturday and hiked out on Sunday. On Sunday 2 hikers claimed to have hiked in the 11.1 miles in 4 hours (believe-it-or-not).

From the moment we arrived there were numerous small cutthroat rising in middle Chain lake. Friday was spent relaxing while fishing middle Chain Lake. We anticipated catching would be easy based on previous experience with cutthroat. That was not the case. The cutthroat were mostly very choosy, refusals were frequent. There were frequent hatches of small midges, and infrequent hatches of callibaetis and caddis. The cutthroat were small; many in the 3" - 4" range, some in

the 6" - 8" range and few in the 9" - 10" range. Paul, Don and Dick fished upper Chain Lake for a short while and found the lake to be very shallow with a few fish around 8".

On Saturday we took a day hike over the ridge to the 2 Doelle Lakes. From the ridge top (elev. 6250') we had a tremendous view, able to see all the way to Mount Baker to the north. On arriving at upper Doelle Lake we again observed numerous cutthroat rising. And again we were to find them choosy with frequent refusals, maybe partly due to the gin clear waters. In upper Doelle Lake the cutthroat, on the average, were slightly larger than middle Chain Lake, with most of the fish in the 8" - 9" range with a few 10" - 12".



***A nice Highlakes Cutthroat.***

Pete had the best fishing at upper Doelle Lake due mainly to having brought his Curtis raft over from Chain lakes. Paul and Don trekked on down to lower Doelle lake. Fishing was difficult because of the brushy shore, however, having waded into the lake they were able to catch a few 8" - 9" cutthroat. By 4:30 in the afternoon we had all returned to middle Chain Lake where a refreshing swim was most welcome after the warm day hiking and fishing.

On Sunday Paul packed his gear and headed home since he needed to work

*(Continued on page 5)*

*(Continued from page 4)*

so he could make his weekly payment into social security so that the rest of us retired folks could continue to play! (Paul made the return hike in 5hrs. 50 minutes; that's youth for you!) Us retired folks spent Sunday fishing lower Chain Lake. Here again, the cutthroat were very choosy, and on the average were a slight bit larger than the fish in middle Chain Lake. Three fish were killed for dinner that night. What a treat after surviving on dehydrated meals!

Monday morning arrived with a clear blue sky, as was usual every day, with us having breakfast and then packing everything for the trek back to civilization. The weather was blue sky the entire trip, and with the near-full moon it made good visibility for nightly visits to the "woods" to squirt. We left middle Chain Lake at 9:35 and arrived at the trailhead at 4:45, tired and dusty, but everyone glad for having had the experience.

---

## **Baja California** *by Bob Young*

This was my 11<sup>th</sup> annual trip down to Loreto, BCS, Mexico. Every one has been an experience. In our group, which is headed up by **Les Johnson**, were myself, fellow club members **John Farrar**, **John Thompson** and about 28 others, most of who are northwesterners. The weather cooperated nicely as it was about 10 degrees cooler than normal and winds were very moderate.

Our primary target on these trips is Dorado and catches have varied from numerous small fish, to very few fish, to years when one got very tired from catching 35 to 50 pound fish. This year there were not very many Dorado of any size (this resulted in a very LOW rod breakage rate) but there were plenty of billfish. Fishing from 20 to 25 foot pangas (2 fishermen per boat), I

would say the average was a good two billfish hookups per boat. The majority of these were hooked up on trolled flies. Les Johnson hooked up a HUGE Blue Marlin which, after some aerobatics, fell on his class tippet and broke off. All my action occurred on the first day of fishing and the last day. I hooked and landed a 75 pound stripped marlin and one Dorado the first day and got two Dorado and a 150-pound sailfish on the last day. In between there were very long boat rides and one other sail hookup and break off. The loss was due to my personally tied surgeons knot failure.

On one occasion we came upon a group of about 6 sailfish and actually had an opportunity to do some casting to them without success. I did have one come to my Miyawaki style popper but I pulled it right away from him. Go figure.

Most of us old timers on the trip consider this week half fishing and half vacation. Fishing is done from 6 AM till about 1:00 PM. The hotel is right on the beach and lunch is waiting when you get back. All meals are included so all one has to do the rest of the day is keep the cooler filled with ice and beer, lounge around the pool, take a siesta, or shop. Sitting around in front, telling tales or tackle tinkering is also part of the afternoon activities. Evenings are spent relaxing with a glass of fine scotch or bourbon. Occasionally there is a Tequila "taste-off". We also have discovered the best ice cream shop in town.

**John Thompson's** wife, Susan, accompanies him and usually spends a day or two lurking around the nearby lagoon birding. She has spotted some beautiful varieties of herons.

This was **John Farrar's** first trip and he had this to say: "The Dorado were bright but few, the Skipjack punishing jousters and the billfish huge and intimidating." His partner also got a Rooster fish of about 15 pounds.

*(Continued on page 6)*

(Continued from page 5)

Each year when new people come along it is hard to convince them that it is not wise to take anything less than 10 weight rods. Les was spooled in shallow water by a Bonito of about 6-7 pounds. When he saw the spindle of his large arbor Islander, he directed the pango to "Vamanos" and we were able to follow the fish and land it.

Anyone interested in going should contact Les and get their name on the 'short' list.

---

## More on the August program

*(In the way of further introducing the next program, we are reprinting this excerpt from the August 6 edition of the Seattle Times, where Dr. Winters is quoted.)*

### Elwha dam removal gets final go-ahead

PORT ANGELES — After years of negotiations, the biggest dam-removal project in history is about to begin, promising to restore one of Washington's legendary salmon rivers.

Today, with Rep. Norm Dicks looking on, the City of Port Angeles, the National Park Service and the Lower Elwha Klallam Tribe will sign an agreement allowing the \$182 million Elwha Restoration Project to go forward.

Congress approved the dam removals in 1992. Following an environmental review process, the project stalled as negotiations dragged on over federally funded mitigation of the project's impact on local communities.

"We've finally hammered out the details with the local parties," says Dicks. "This project is going to happen."

To read the complete article, go to: [http://seattletimes.nwsourc.com/html/localnews/2001998230\\_elwha06m.html](http://seattletimes.nwsourc.com/html/localnews/2001998230_elwha06m.html)

## Club Notes

### New Member

The membership committee is recommending Bob Davidson for club membership to be voted on at the August meeting. His sponsors are Fran Wood and Dave Walsh. He is a retired UW physician. Bob wishes to learn more about environmental rehab, fly casting, and historical preservation. He would like to serve on the conservation and youth committees. Below is his bio he submitted.

### Bob Davidson

Bob grew up in Great Falls, Montana, and spent part of his summers on his uncle's ranch outside of Philipsburg, just over the hill from Rock Creek where he fished often with his cousins. He fished with garden hackle and probably could have caught trout on a bare hook there were so many.

Bob did very little fishing until he moved back to Great Falls to practice medicine where he eventually took up fly fishing. His favorite was the Smith River (long before there was public access).

He moved to Bellevue about 35 years ago where he fly fished a bit more seriously after he retired six years ago. Bob has fished Henry's Fork and the South Fork of the Snake once or twice a year for the past four years, usually with a guide (in fact, he is heading back over there this coming Friday).

Over the past year, Bob has attended meetings as a guest of Fran Wood, a colleague of Bob's at the medical school.

---

### WFFC RESOLUTION: Senior Members

WHEREAS, the Club recognizes that it has a number of senior active members who have been paying dues for many years; and

WHEREAS, the Club believes that it is just and appropriate to recognize and reward such long-term financial support by providing a separate membership category for such individuals that will provide relief from the payment of dues, but preserve their voting and other active membership rights and encourage their continued involvement in the Club;

NOW, THEREFORE, IT IS HEREBY RESOLVED, that ARTICLE II, Section 2 of the Bylaws of the Club shall be amended to read in full as follows:

Section 2. Categories of Members. The membership of the Club shall consist of four (4) categories: active, senior, associate and honorary:

- A. Active members ....
- B. Senior members shall be those individuals who have been elected to active membership in the Club and who have paid dues as such for 50 years or longer, or for 40 years or longer if such individual is age 75 years or older. A member shall attain such status effective for the calendar year immediately following the one in which he first satisfies the foregoing requirements. Senior members shall have the right to vote and in all other respects shall have the same rights as active members, but shall pay no dues. An individual who is eligible for senior membership status shall so advise the First Vice President and shall provide evidence of eligibility, but shall not be required to comply with Section 3 below. Senior members shall be included among active members for purposes of Section 5 below.
- C. Associate members ....
- D. Honorary members ....

**Celebrating the Life of WFFC Member Bruce Clingan (1929 - 2004)**

A memorial service was held for long time WFFC member Bruce Clingan on Friday, July 23rd, at St Andrew's Lutheran Church in Bellevue, where Bruce & Dorothy have been members since 1980. Approximately 20 WFFC members & wives were present. -- Bruce went to be with the Lord on Friday, July 16, 2004. The many cards, calls, visits and prayers by caring friends during the various medical challenges that characterized his final years enriched his life and were greatly appreciated by Bruce and his family.

As a young man Bruce served his country as a Marine Aviator, flying 106 combat missions against the communist forces in Korea. In 1954, while still in the Marines he and his wife Dotty were married. After completing his active duty in the Marine Corps, he returned to Purdue University to resume his education, receiving his BS in Aeronautical Engineering in 1956. He then moved to the Seattle area where he began a long career at Boeing.

Bruce worked as a Boeing Engineer for 38 years in various projects and research in dynamics and loads. In 1993 he was honored by selection as an Associate Technical Fellow of The Boeing Company. Bruce said he considered himself very fortunate to have achieved his two boyhood dreams of flying fighters from an aircraft carrier and becoming an aeronautical engineer.

Bruce's favorite activities outside of flying and work were hunting and fishing, especially fly fishing, and camping with his family. He was sponsored into WFFC membership by Don Sachs in 1956 and remained active until his death. Bruce served as club president in 1962 and rarely missed meetings or the Dry Falls, Chopaka, and more recently the Yakutat silver salmon fishing trips.

Bruce is survived by Dorothy his wife of 50 years; his son Rear Admiral Bruce W. Clingan of Bremerton; his daughter Carol L. Lemmon of Everett; and 4 grandchildren.

-- Gifts in memory of Bruce are suggested to the St Andrew's Housing Group of the St. Andrew's Lutheran Church, 2650 148th Ave SE, Bellevue, WA 98007, or the WFFC Foundation, P.O. Box 639, Mercer Island, WA 98040.

We will greatly miss Bruce but the contributions he made to our many fond memories will linger on!



Washington Fly Fishing Club  
P.O. Box 639  
Mercer Island, WA 98040  
www.wffc.com

Stamp  
here

## Meeting Announcement



Meetings are held on the third Tuesday of each month at The College Club, 505 Madison St.

The Wet Fly hour begins at 5:30 PM and dinner is served at 6:45 PM

August Guest Speaker – Dr. Brian Winter, National Park Service Project Manager for the Elwha Project since 1985. The project will be “..dam construction steps...in reverse.” says Dr. Winter. It is surely a little more complicated than that so don't miss this sure to be fascinating presentation. For more, see page 7.